

RSO977-TH Series

Gyroscope Stabilization Multispectral Anti-corrosion Network Thermal PTZ Camera



RSO977 is a surveillance camera designed for maritime observation and forest fire prevention. Its dual-axis gyro-stabilized electro-optical pan-tilt system incorporates advanced attitude sensors, which automatically adjust the camera's position based on real-time environmental vibrations, minimizing image instability—ideal for maritime applications. Equipped with proprietary AI algorithms, the camera enables real-time fire and smoke detection. Combined with 360° intelligent scanning, it achieves full-area fire monitoring, making it a reliable solution for fire prevention. The lens features an auto-sensing rain wiper and supports optical with algorithmic defogging, significantly reducing environmental interference for clearer imaging. Additionally, the base includes a built-in level meter and ergonomic handle for easier installation and deployment.

Key Features

■ High-Resolution Imaging

Featuring an 4MP progressive scan CMOS sensor, the SO977 delivers 2688x1520 Ultra HD resolution, ensuring sharp and highly detailed video. The 40x optical zoom provides clear magnification of distant subjects, while a wide field of view allows efficient coverage of large areas.

■ Superior Night Vision

Equipped with IR LED illumination, the camera offers up to 150m visibility in total darkness. The IR intensity automatically adjusts based on zoom levels, ensuring optimal brightness and contrast for night-time surveillance.

■ Rugged and Weatherproof Design (IP67)

Designed for harsh environments, the IP67-rated housing makes the camera fully dustproof and waterproof, withstanding -40°C to +70°C. This ensures reliable operation in extreme conditions, from freezing cold to high heat

■ Advanced PTZ (Pan, Tilt, Zoom) Control

With 360° endless pan and -50° to 90° tilt, the camera provides smooth, precise movement across a surveillance area. It supports 255 preset positions and automated patrol routes, enhancing monitoring efficiency.

■ Optimized Video Compression and Streaming

Supporting H.265 and H.264 compression, the camera reduces bandwidth usage while maintaining high-quality video. Three video streams enable efficient remote monitoring and recording across different platforms.

■ Enhanced Protection Features

With TVS 6000V lightning and surge protection, the camera withstands power fluctuations and extreme weather, ensuring long-term durability for outdoor and mobile surveillance.

RSO977-TH Series

Gyroscope Stabilization Multispectral Anti-corrosion Network Thermal PTZ Camera

Technical Specifications

Thermal Module

Image Sensor	Vanadium Oxide Uncooled Focal Plane Arrays
Resolution	640x512
Pixel interval	12μm
Response Waveband	8μm to 14μm
NETD	≤35mK @ F1.0, 300 K
Focal Length	50mm, 75mm
IFOV	50mm: 0.240mrad, 75 mm: 0.160mrad
Field of View	50mm: 8.8°×7.0° (H × V), 75 mm: 5.9°× 4.7° (H × V)
Min. Focusing Distance	50mm: 3m, 75mm: 5m
Aperture	F1.0
Focus Mode	Motorized, Auto /Manual
Digital Zoom	From 1.0 x to 8.0 × Continuing zooming (Step 0.1 x), Zoom in any area
Color Palettes	Up to 13 palettes. Supported in White Hot/Black Hot mode/RainBow mode/Tricolor mode/Blue Red Yellow Mode/Blue Purple Red mode/Blue Green Red mode/Gray Red mode/Blue Orange mode/Blue Red mode/Gradual Red mode/Gradual Green mode/Gradual Blue mode

Optical Module

Image Sensor	1/1.8" Progressive Scan CMOS
Max. Resolution	52x: 2688x1520 (4MP), 40x: 2688x1520 (4MP)
Min. Illumination	52x: Color: 0.005Lux@(F1.5, AGC ON), B/W: 0.0005Lux@(F1.5, IR ON) 40x: Color: 0.0001Lux@(F1.6, AGC ON), B/W: 0.00005Lux@(F1.6, AGC ON)
Shutter Speed	1/25 s to 1/100,000 s, Support slow shutter
Focal Length	52x: 6.1mm to 317mm, 40x: 6.6mm to 264mm
Field of View	Horizontal: 52x: 65.5°~1.8°, 40x: Horizontal: 59.2° × 1.93°
Aperture Range	F1.61 to F5.19
Focus Mode	Auto /Semi-auto /Manual
WDR	Yes
Optical Defog	Yes

PTZ

Movement Rang	Pan: 360° Continuous Rotate; Tilt: From -50° to +90° (From -50° to +90°when take wiper off)
Pan Speed	Configurable, From 0.05°/s to 300°/s
Tilt Speed	Configurable, From 0.05°/s to 150°/s
Presets	255 in total
Patrol Scan	16 patrols; Up to 32 presets per patrol
Pattern Scan	Up to 16 apple peel scanning patrols with 16 gears
PT Status	Turn On/Turn Off
Scheduled Task	Preset/Pattern Scan/Patrol Scan

Laser Illuminator

Working Distance	1000m, 800m
------------------	-------------

Gyro-stabilization

Gyro Stabilization Type	2-Axis
Stabilized Frequency	≤1HZ
Gyro Steady-state Accuracy	0.5°

Smart Function

VCA (Video Content Analysis)	Depth Perimeter (Intrusion, Hover, Stay, Transboundary, Leave), Fire-smoke Recognize (Smoke, High Temperature, Fire, Night High Temperature), Electronic Fence, Any Surface Shielding Area, Crossing Detection
Fire Detection	Dynamic fire detection, up to 5 fire points detectable

Video

Video Stream	Thermal channel: 640x512 Optical channel: 2560x1440, 1920x1080
Video Compression	H.265 /H.264

RSO977-TH Series

Gyroscope Stabilization Multispectral Anti-corrosion Network Thermal PTZ Camera

Network									
Protocols	TCP, UDP, HTTP, FTP, DNS, RTP, RTSP, NTP, IPv4								
API	SOAR SDK, ONVIF Profile S								
Simultaneous Live View	Up to 5 channels								
Security	User authentication (ID and password), MAC address binding, IEEE 802.1x access control, IP address filtering								
Web Browser	Internet Explorer								
Interface									
Communication Interface	1, RJ45 10M/100M Self-adaptive Ethernet interface. 1, RS-422 interface								
Analog Video Output	1.0 V [p-p]/ 75 Ω, BNC for thermal channel								
General									
Power	IP66								
Power Consumption	Typical consumption: 28W; Turn on PTZ and heat up: 60W; Full functions on in clouding laser: 92W								
Working Temperature/Humidity	-40°C to 70°C (-40°F to 158°F) / 95% or less								
Wiper	Yes, Auto /Manual								
Protection Level	IP67 Standard TVS 6000V lightning protection, Surge protection, Reverse connection protection								
Dimension	326mm × 326mm × 441mm (12.83" × 12.83" × 17.36")								
Weight	Approx. 18kg (39.68lb)								
DORI Distance									
Target Object	Human (1.8m x 0.5m)			Vehicle (1.4m x 1.4m)			Vessel (10m x 5m)		
Focus Lens	Detection	Recognition	Identification	Detection	Recognition	Identification	Detection	Recognition	Identification
50mm	2,653m	659m	329m	6,573m	1,643m	822m	19,642m	4,910m	2,455m
75mm	3,953m	988m	494m	9,860m	2,465m	1,233m	29,463m	7,366m	3,683m
Ordering Information									
Thermal Camera	RSO977-TH650B40					Thermal: 50mm; Visible: 6.6mm to 264mm, 40x			
	RSO977-TH675B52					Thermal: 75mm; Visible: 6.1mm to 317mm, 52x			
	RSO977-CB4252LS10					Visible: 6.1mm to 317mm, 52x; Laser Illuminator : 1000m			

RSO977-TH Series

Gyroscope Stabilization Multispectral Anti-corrosion Network Thermal PTZ Camera

Accessories (included)

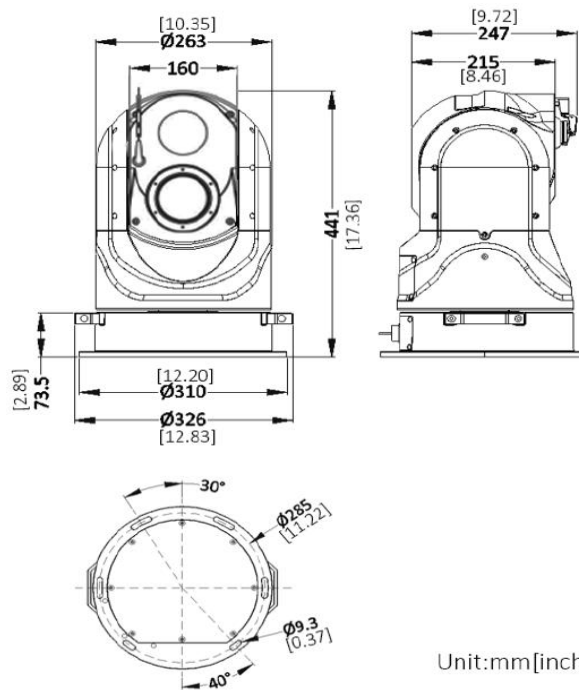


DC24V/5A Power Adapter

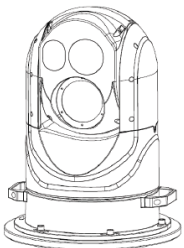


Cable

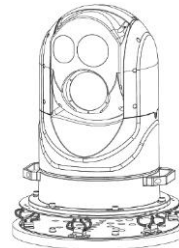
Dimensions (mm)



Installation



Desk Mounted



Vehicle Mounted with Anti-vibration Base